



## Langwood Court, Rossendale, Lancashire BB4 5PW £750 PCM

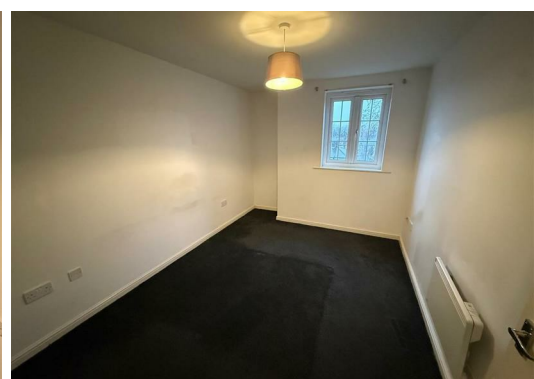
A well-presented two-bedroom 2nd floor flat situated in a highly convenient location close to Haslingden, with a range of local amenities nearby and excellent transport links for commuting to Manchester and surrounding areas.

The accommodation briefly comprises a welcoming entrance hallway, a modern fitted open-plan kitchen and lounge, two well-proportioned bedrooms, and a contemporary three-piece bathroom suite with a shower over the bath.

The property further benefits from neutral décor throughout, neutral carpets and flooring, electric heating, uPVC double glazing, and allocated parking.

Early viewing is highly recommended to fully appreciate the location and accommodation on offer.

**MUST BE VIEWED!**





**Disclaimer:**

These particulars, whilst believed to be accurate are set out as a general guideline and do not constitute any part of an offer or contract. Intending Tenants should not rely on them as statements of representation of fact, but must satisfy themselves by inspection or otherwise as to their accuracy. Please note that we have not tested any apparatus, equipment, fixtures, fittings or services including gas central heating and so cannot verify they are in working order. Although we try to ensure accuracy, if measurements are used in this listing, they may be approximate. Therefore if intending Tenants need accurate measurements to order carpeting or to ensure existing furniture will fit, they should take such measurements themselves. Photographs are reproduced general information and it must not be inferred that any item is included for let with the property. Please contact 01706 823 131 for further details.

Viewing:

Viewing strictly by appointment through Lifestyle Sales and Lettings.

